



## SPECIFICATION SHEET

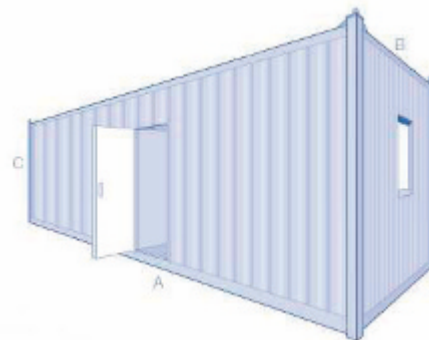
### 12.2 M (40 x 11 x 10FT) Accommodation Module

A60 Accommodation offering  
Safe and Comfortable living for  
8 - 12 persons.



#### Specifications:

- Certified to DNV 2.7-1 – DNV 2.7-2/ EN 12079
- Lloyd's Certification Scheme (Zone II optional)
- Airlock System (optional in different configuration)
- Combined Desk-/ Bunk Bed
- Lockers including hang-/ shelving
- En Suite Shower room
- Air-conditioning
- Fire & Gas unit (CPFG – Optional)
- High quality fixtures
- Plug and Play Hook Up
- Stacking 4 high fixed by twist lock
- Manufactured in house to ISO 9001
- Modules available for hire or sale



#### Titan Offshore Modules NL

Tel: +31 (0) 20 820 23 38

Tel: +31 (0) 62 246 25 49

Tel: +31 (0) 65 171 77 36

[info@titanmodules.com](mailto:info@titanmodules.com)

[www.titanmodules.com](http://www.titanmodules.com)

#### Dimensions

A 12.2m x B 3.35m x C 3.04m

#### Weight

Approx. 12.000 Kg

#### Certification

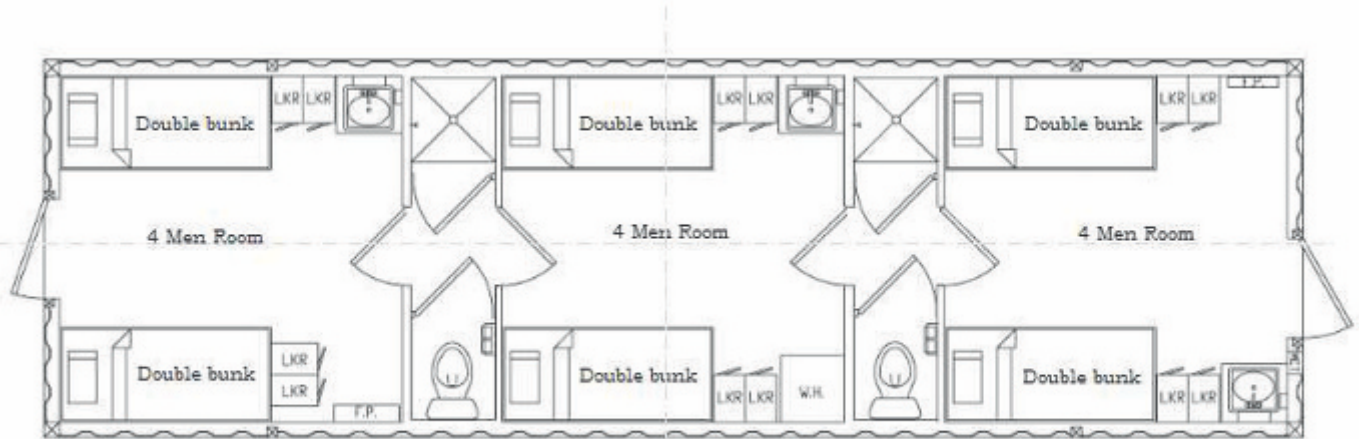
IMO-/SOLAS, DNV 2.7-1 / EN 120709



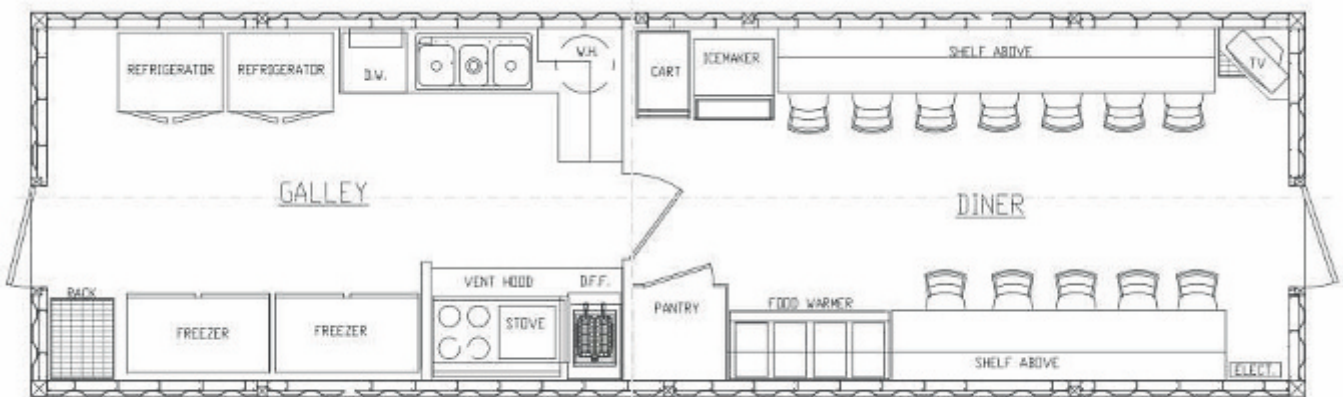


# SPECIFICATION SHEET

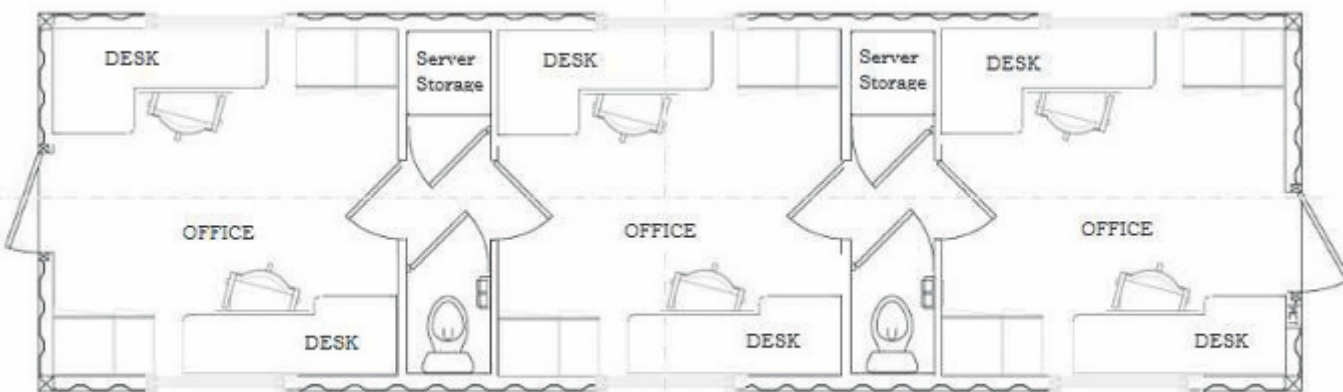
## Indicative Floorplan 40 FT



12 Men Sleeper



Galley - Diner



Office

